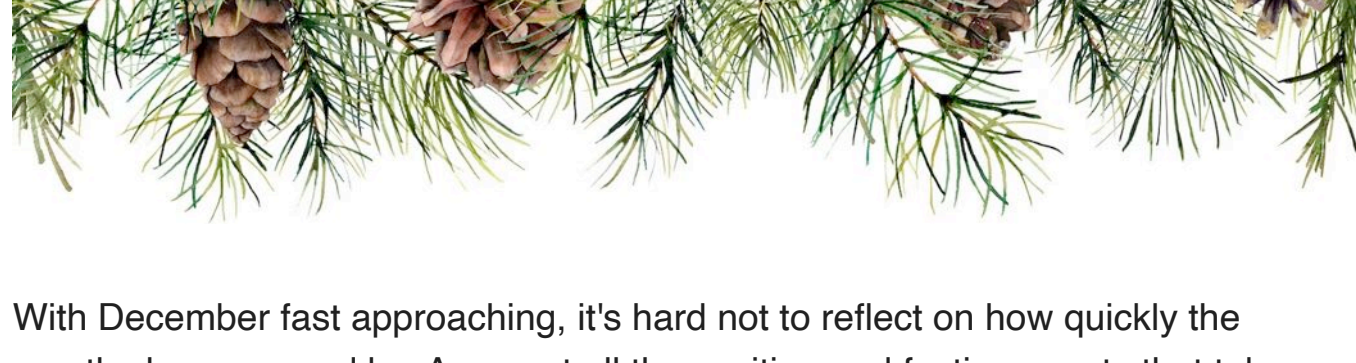




## Welcome To Our Newsletter



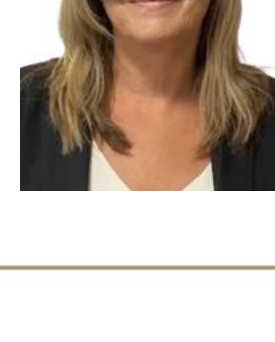
With December fast approaching, it's hard not to reflect on how quickly the months have passed by. Amongst all the exciting and festive events that take place at this time of year, it is important to pause and appreciate the little moments. So, sit back and read all about our recent happenings, activities and celebrations.

Also, if you know someone who would like to receive our email newsletters just let us know, or forward them the newsletter sign up link below:

[Newsletter Sign-Up](#)

Best wishes,

**Liz Brown**  
Home Manager



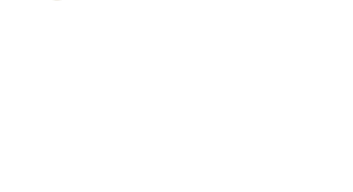
## Date For Your Diary



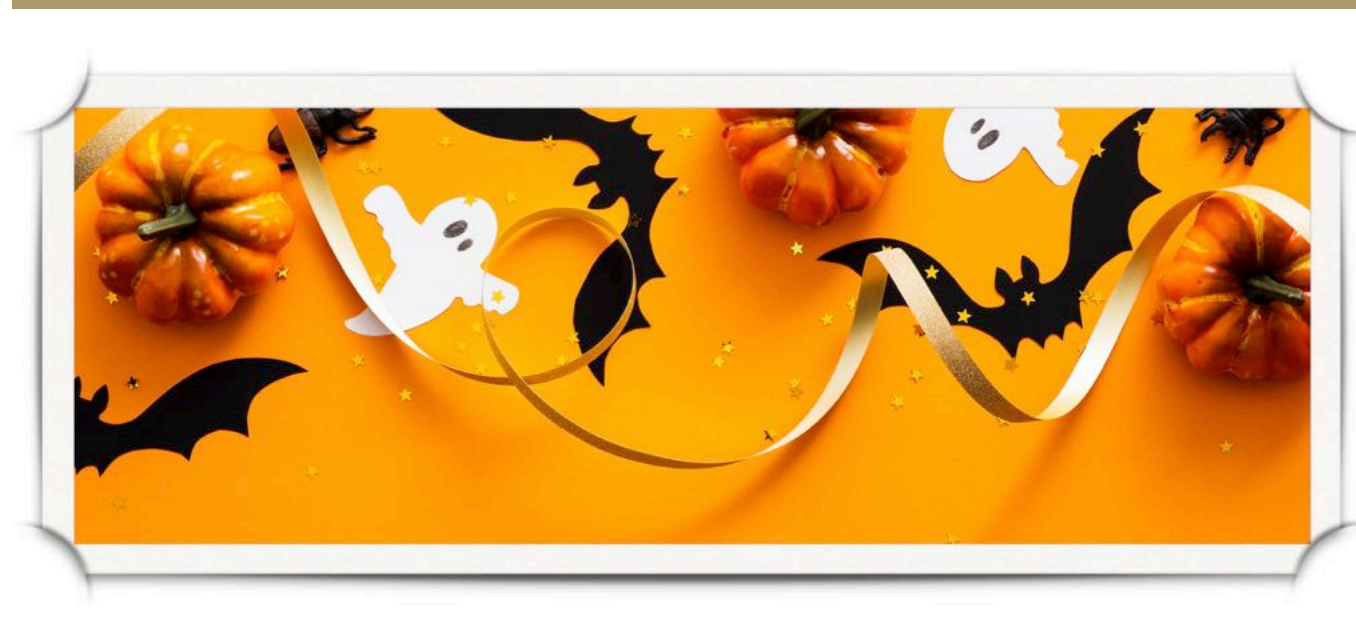
### CHRISTMAS MARKET

Enjoy a festive afternoon browsing our variety of market stalls where you can buy Christmas gifts, fashion, homeware, crafts, sweet treats, food & drink. All whilst feasting on complimentary mulled wine and mince pies.

Saturday 2nd December  
from 1pm - 4pm



## Halloween



## Spooky Season!

We had a fantastic fun Halloween day at Bothwell Castle Care Home including games such as guess what is in the box, ping pong water ball and pass the ball into the box.



In the evening our home was filled with little trick or treaters. Our residents loved seeing the children all dressed up in their fantastic costumes and listening to their jokes and songs. Thank you to all who came along and added some extra spooky joy to our celebrations.



## Community Interaction



## Thoughtful Gifts

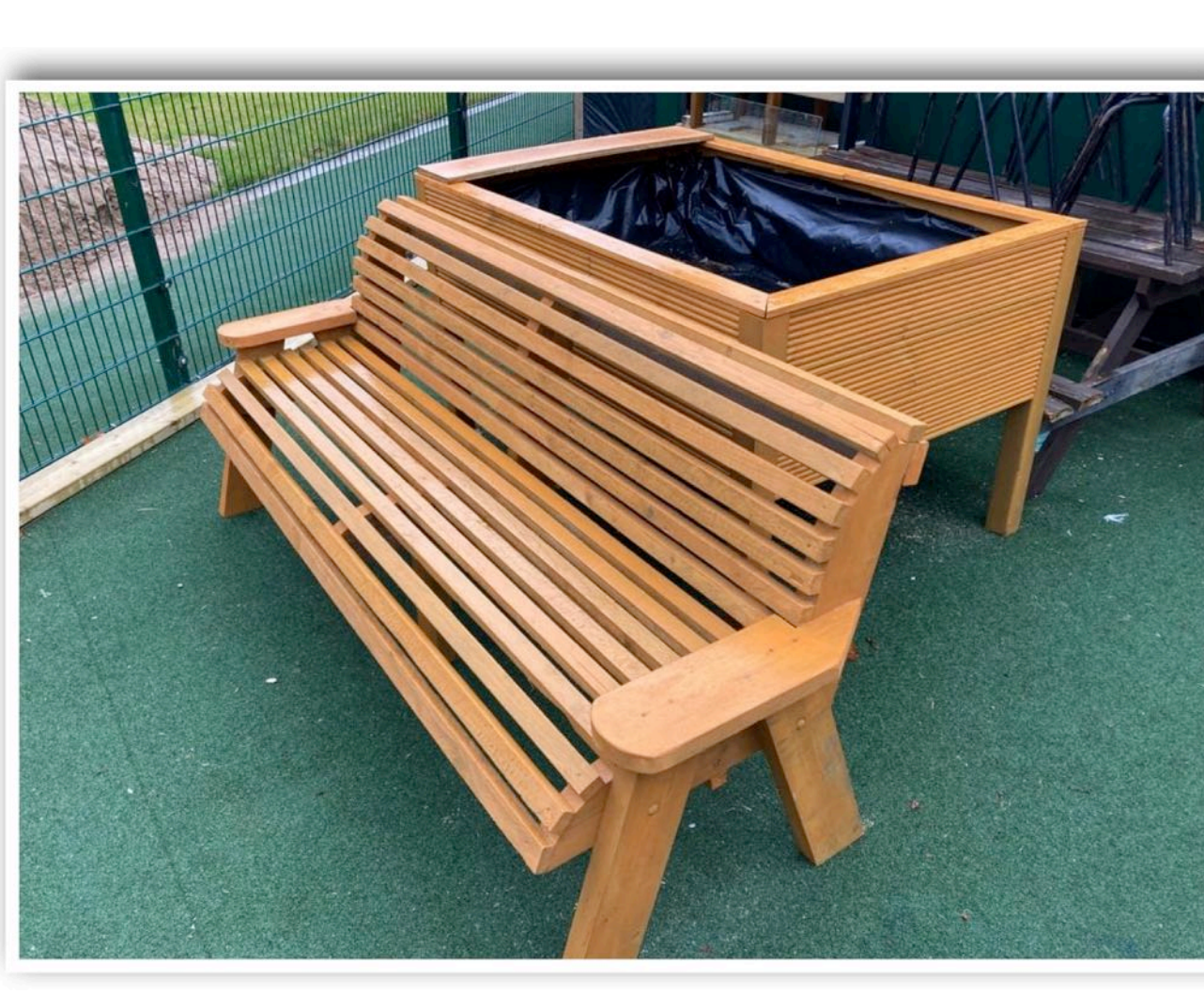
### Harvest Food Bank

A massive thank you to all who donated to the collection for our harvest food bank. This was collected by Bothwell Parish Church Community Larder and was distributed within the community to help those in need. Thank you all.

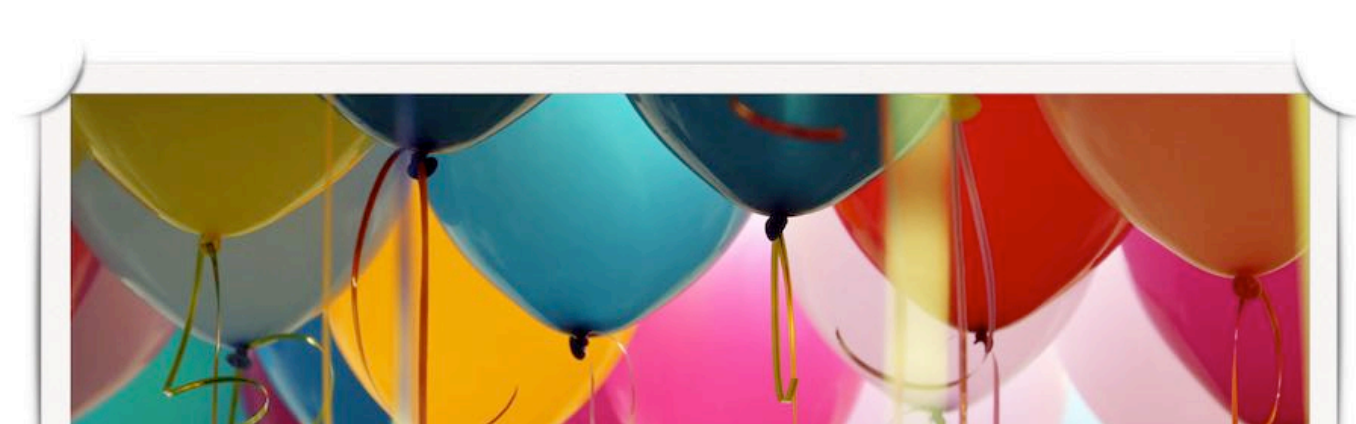


### Uddingston Men's Shed

A massive thank you to Uddingston Men's Shed for this large planter and bench. We are looking forward to seeing flowers in full bloom in the planter and residents using the bench enjoying our lovely outdoor space.



## Birthdays



## Happy Birthday!

Birthdays, special occasions and life events are always marked in a personal and meaningful way specifically for each resident. Some residents like the day to pass quietly with no fuss and others enjoy a party and lots of fun!

We would like to wish a very Happy Birthday to Margaret and every resident and staff member celebrating a birthday, with love from us all.



## Company Policies

Care Concern Group aim to be as open and transparent as possible and therefore all our Company Policies and Procedures can be accessed from the Manager or by request from a member of our Admin Team. Should you wish to view a specific policy for reference, these can be provided in an email or as a paper copy on request.

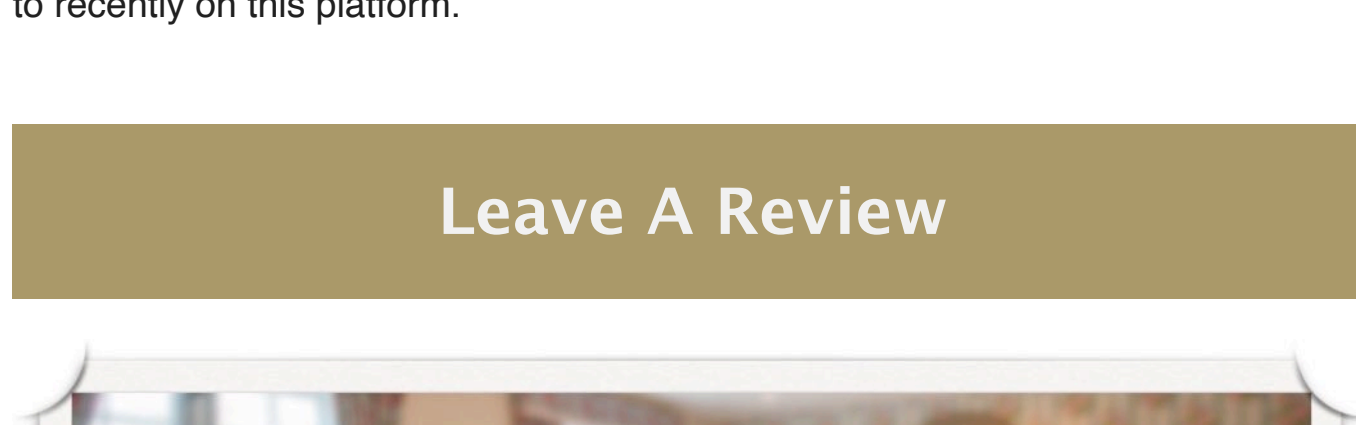


## Keep In Touch



Communication is key, so make sure to check out our [Bothwell Castle Facebook Page](#) and give us a Like! We love to share photographs of what we have been up to recently on this platform.

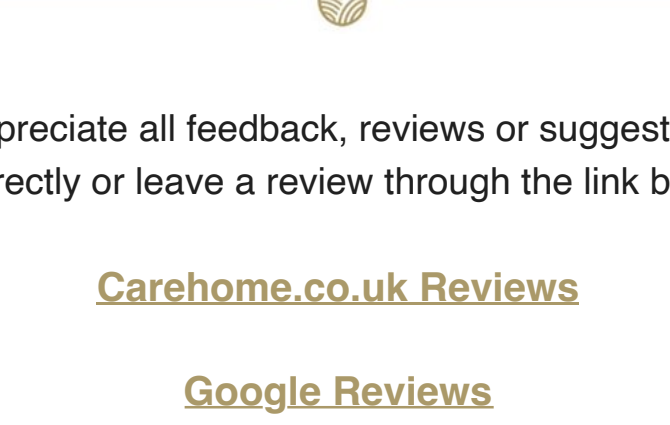
## Leave A Review



We would greatly appreciate all feedback, reviews or suggestions you may have. Please contact us directly or leave a review through the link below:

[Carshome.co.uk Reviews](#)

[Google Reviews](#)



Produced by [ChicChat Marketing Ltd.](#)

Copyright © 2023 Bothwell Castle Care Home, All rights reserved.

Want to change how you receive these emails?  
You can [update your preferences](#) or [unsubscribe from this list](#)

