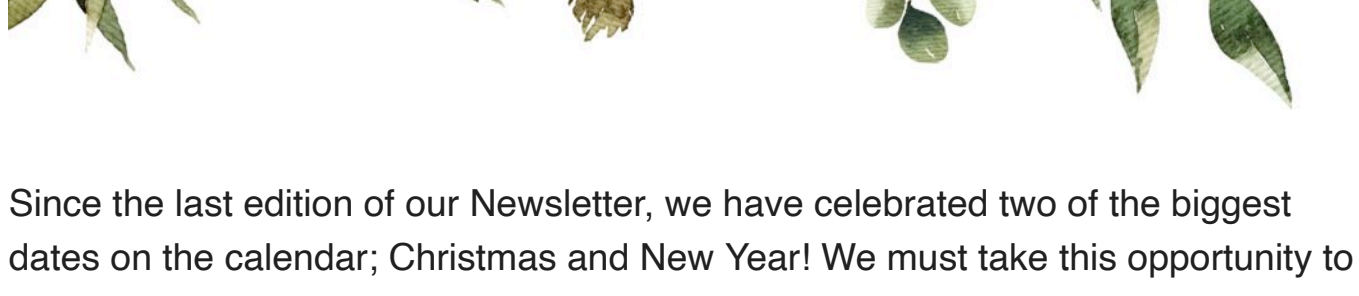




Welcome To Our Newsletter



Since the last edition of our Newsletter, we have celebrated two of the biggest dates on the calendar; Christmas and New Year! We must take this opportunity to wish you all the very best for 2024.

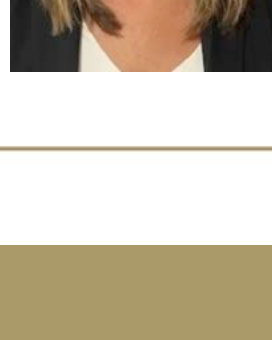
Have a read about all that we got up to during the festive season.

Also, if you know someone who would like to receive our email newsletters just let us know, or forward them the newsletter sign up link below:

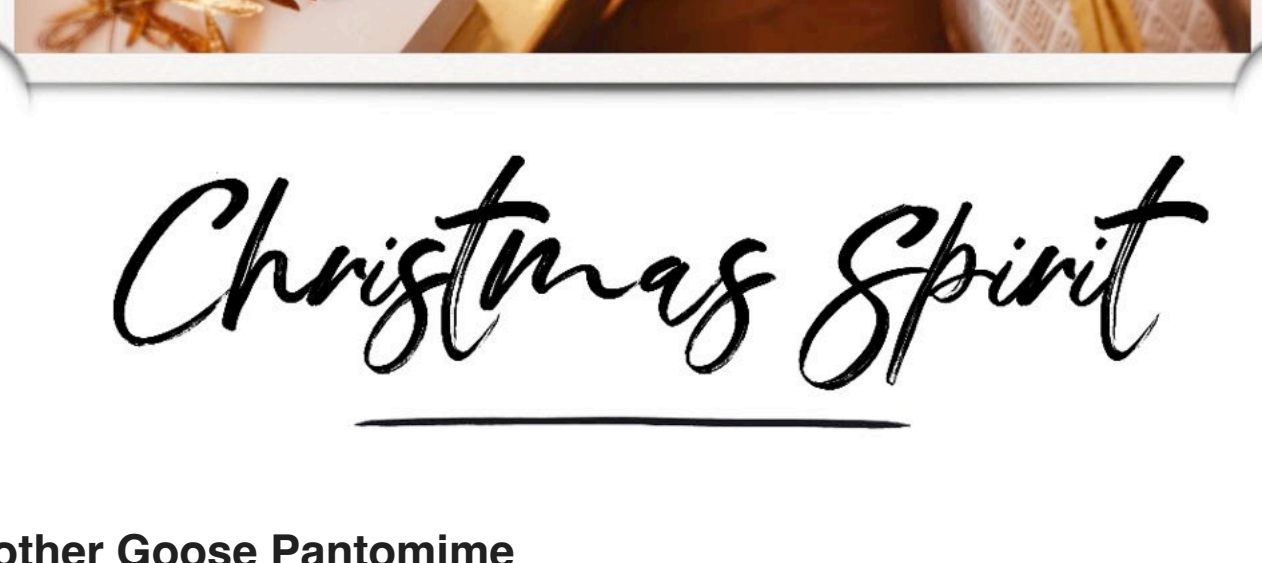
[Newsletter Sign-Up](#)

Best wishes,

Liz Brown
Home Manager



Christmas Festivities



Christmas Spirit

Mother Goose Pantomime

The festive season is incomplete without the joy and laughter that a great pantomime brings. And this year, the residents of Bothwell Castle Care Home were in for a delightful treat as a production of Mother Goose was performed right within the premises.

The stage was set, the lights were on, and the atmosphere was filled with excitement and anticipation as the cast of the pantomime took their positions. The residents, their families, and the staff members were all eagerly waiting for the show to begin.

And when it did, it was nothing short of spectacular. The actors brought the characters to life, keeping the audience engaged and entertained throughout the performance. There were moments of laughter, moments of surprise, and moments of pure joy that filled the room.

For the residents of the care home, the pantomime was more than just a show. It was an opportunity to relive cherished memories and share a sense of community with those around them. Watching the performance together created a sense of togetherness and camaraderie that was truly heartwarming.

Overall, it was an unforgettable experience that brought a ray of sunshine to the lives of the residents of Bothwell Castle Care Home. It just goes to show that the magic of Christmas and the joy of a great pantomime can truly make a difference in the lives of those around us.



Christmas Day

At Bothwell Castle Care Home, Christmas Day was a day filled with joy and merriment. The residents, their family members and friends, along with the staff team celebrated the day with great enthusiasm. The highlight of the day was the sumptuous Christmas dinner, which was prepared with all the traditional trimmings. The delicious food was enjoyed by everyone and added to the festive spirit of the day.

Adding to the excitement was a special visit from Santa and his elves, who brought along plenty of gifts for all the residents. The presence of Santa and his helpers brought smiles to everyone's faces, and the residents were delighted to receive gifts.

Overall, it was a Christmas Day that will be remembered for a long time to come, thanks to the efforts of the staff team, Santa and his elves, and the warm community of Bothwell Castle Care Home.



Out & About



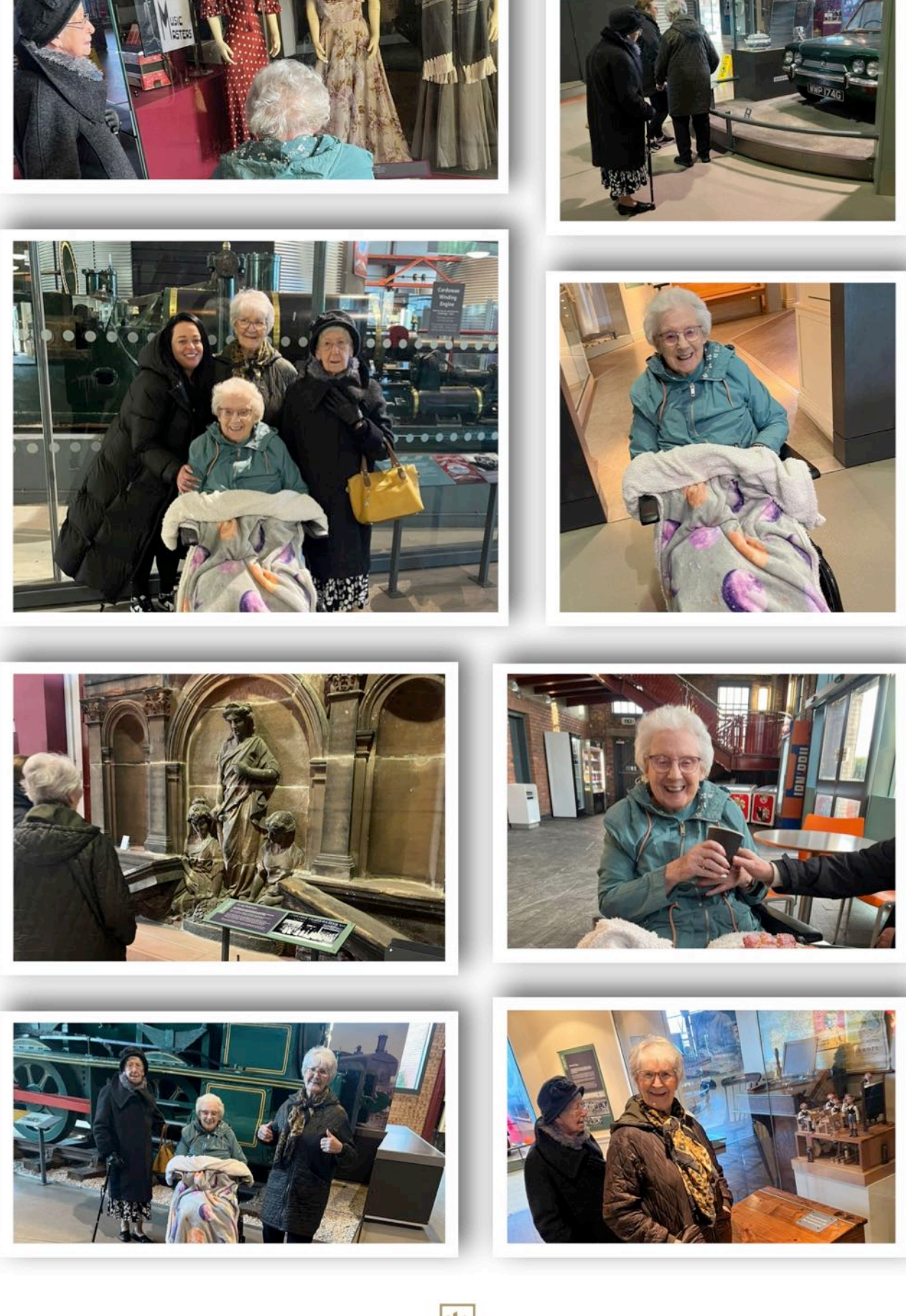
Wonderful Outings

We relish the opportunity to explore the great outdoors and immerse ourselves in the rich cultural history of Scotland. Recently, we embarked on an exciting adventure that took us on a nostalgic trip down memory lane to the [Summerlee Museum of Scottish Industrial Life](#).

Nestled in the heart of Coatbridge, this remarkable museum is an ode to the country's industrial and social past. It is located on the very site where the Victorian Summerlee Iron Works and the former Hydrocon Crane factory once stood, making it a unique and historically significant destination.

Our day was filled with wonder as we explored the various exhibits, taking in the sights, sounds, and stories of a bygone era. We marvelled at the ingenuity of the machinery, the grit and determination of the workers, and the pivotal role that industry played in shaping Scottish society.

To cap off our unforgettable experience, we treated ourselves to a refreshing cup of tea in the museum's cosy cafe. It was the perfect end to a perfect day.



Keeping Active



Big Smiles!

We believe our residents should be able to make the most of each and every day. Our dedicated team works hard to provide a variety of options so that residents have all they need to live a full and varied life. We encourage all residents to keep doing exactly what makes them happy...



No two people are alike and we strive to create a space where our residents can enjoy positive experiences and make their own decisions. As you can see by the smile on the face of our happy resident, cleaning and tidying has always been a source of joy for her and we are more than happy to ensure she continues with this simple pleasure!



Company Policies

Care Concern Group aim to be as open and transparent as possible and therefore all our Company Policies and Procedures can be accessed from the Manager or by request from a member of our Admin Team. Should you wish to view a specific policy for reference, these can be provided in an email or as a paper copy on request.

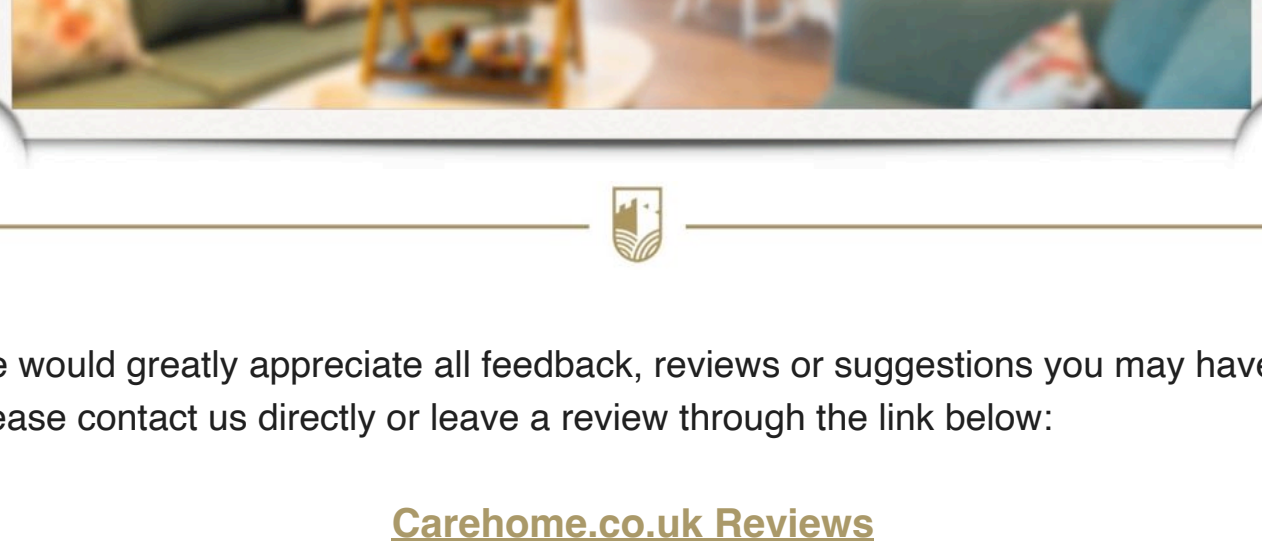


Keep In Touch



Communication is key, so make sure to check out our [Bothwell Castle Facebook Page](#) and give us a Like! We love to share photographs of what we have been up to recently on this platform.

Leave A Review



We would greatly appreciate all feedback, reviews or suggestions you may have. Please contact us directly or leave a review through the link below:

[Carehome.co.uk Reviews](#)

[Google Reviews](#)



Produced by [ChicChat Marketing Ltd.](#)

Copyright © 2024 Bothwell Castle Care Home. All rights reserved.

Want to change how you receive these emails?
You can update your preferences or unsubscribe from this list.

